



SCIENTIFIC PLASTICS COMPANY, INC.

FLUSH MOUNT RIM INSTALLATION



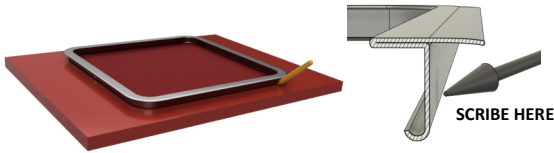
- 1 Important –First check the frame to the Polyethylene sink.**



Fit frame on top of sink flange. Top of frame should cover exterior edge of sink flange with no gaps showing, fit will be loose.

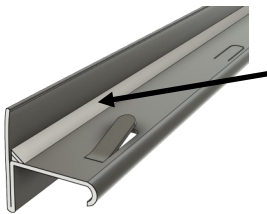
DO NOT CUT HOLE IN COUNTER YET.

- 2 Scribe around the outside of the J hook of the FRAME (DO NOT USE SINK).**



Position frame on the countertop as it will be installed with the sink.

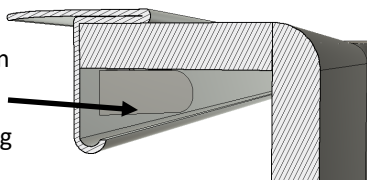
- 3 Caulk with high quality silicone .**



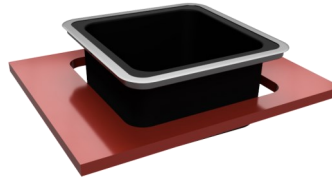
Caulk where the top of the sink flange contacts the bottom of the rim.

- 4 Fit sink into Frame.**

Fit sink into Frame, then push out stamped tabs secure sink in rim during installation.

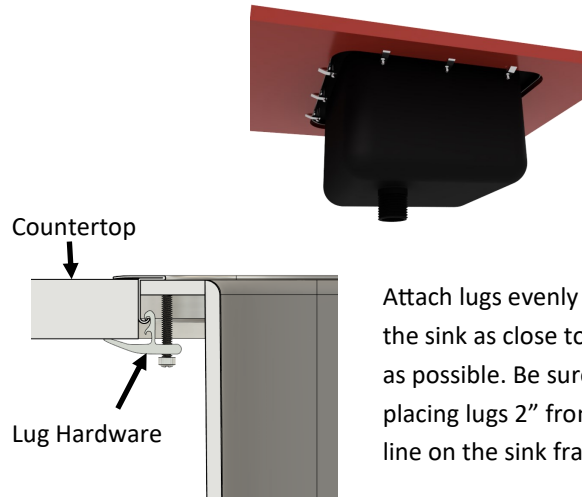


- 5 Set sink bowl (FRAME ATTACHED) into countertop.**



Position frame and bowl into opening. Outside of frame will hold sink in hole. NOTE: Sink will still be loose in rim at this point but held in place by tabs pushed out in step 4.

- 6 Attach lug hardware then tighten.**



Attach lugs evenly around the sink as close to corners as possible. Be sure to avoid placing lugs 2" from the weld line on the sink frame.

- 7 Inspect for secure fit, clean up any excess caulk that may have pushed out between the rim and the sink.**



WARRANTY: Manufacturer will replace any defective frame within one year of purchase. Improper installation will void warranty .

Scientific Plastics Company, Inc. 1016 Southwest Blvd Kansas City Kansas 66103
Toll-Free:(800)558-2027 Toll-Free Fax:(800)548-0448 www.scientificplastics.com