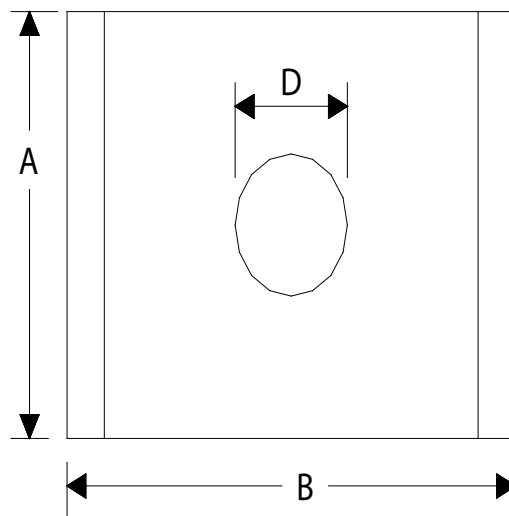


Cupsink Mounting Bracket and Backnut



The above units are designed for 1 to 1-1/4" countertops. For other depths consult factory. Unit supplied with nut for attachment to cupsink.

SYMBOL	FOR SINK #	A	B	C	D
W31413-150	W39021-150	4.5"	6-5/8"	2"	2-1/4"
W31414-150	W39024-150	4.5"	6-5/8"	4-5/16"	2-5/16"
W31414-150	W39030-150	4.5"	6-5/8"	4-5/16"	2-5/16"